



Burmantofts & Richmond Hill Neighbourhood Improvement Plan 2013/14

For further information, please contact:
Sarah May
Neighbourhood Manager, Burmantofts & Richmond Hill
sarah.may@leeds.gov.uk
0113 3367681 or 07891 272359

Contents

Introduction to Burmantofts & Richmond Hill Priority Neighbourhood	Page 3 - 6
Key achievements in 2012/13	Page 6 - 8
Assessment of 2012 Neighbourhood Index data	Page 9 - 14
Burmantofts & Richmond Hill Neighbourhood Survey Results 2013	Page 14 - 15
Burmantofts & Richmond Hill Neighbourhood Improvement Action Plan 2013/14	Page 15 - 23
Appendix 1 - Map of Burmantofts Priority Neighbourhood	Page 24
Appendix 2 - Map of Richmond Hill Priority Neighbourhood	Page 25
Appendix 3 – Lincoln Green Ebor Gardens Neighbourhood Index profile	Page 26
Appendix 4 - Harehills – Comptons, Sutherlands & Nowells Neighbourhood Index profile	Page 27
Appendix 5 – Osmodthorpe & East End Park Neighbourhood Index profile	Page 28
Appendix 6 – Cross Green, East End Park & Richmond Hill Neighbourhood Index profile	Page 29

An introduction to Burmantofts & Richmond Hill Priority Neighbourhood

Neighbourhood Improvement Plan

The purpose of the Neighbourhood Improvement Plan (NIP) is to highlight the emerging issues and key challenges which the neighbourhood currently faces and the projects which are to be put in place over the next 12 months to improve the area. The NIP uses both statistical information as well as local residents views gathered through community consultation to determine what are the key priorities that need to be addressed across the area.

Neighbourhood Index

Leeds is divided into 108 Middle Super Output Areas (MSOAs). All statistical information contained in this document will be ranked out of 108, with the higher the ranking meaning the better the score. The Burmantofts & Richmond Hill priority neighbourhood is made up of the following four MSOAs:

- E02002393: Lincoln Green & Ebor Gardens
- E02002394: Harehills – Comptons, Sutherlands, Nowells
- E02002399: Osmondthorpe & East End Park
- E02002404: Cross Green, East End Park and Richmond Hill

The detailed Neighbourhood Index profiles for all the above MSOA's are attached as appendices to this document.

Community Engagement

The following activities and engagement mechanisms are already in place with local people to ensure that they have an input into improving their community:

Community Leadership Team (CLT) – This is a meeting whereby key local residents attend to discuss issues which are important to them and to develop solutions to address neighbourhood problems. Local residents who are members of the CLT are those who have civic roles in their local community, for example, school governors, chairs of local tenants and residents groups, etc. The CLT is currently chaired by Councillor Ron Grahame and takes place on a six weekly basis in a local community venue. A co-optee is to be elected from the CLT to sit on the Inner East Area Committee in order to feed through local views and influence strategic decision making on Area Committee policy. The meeting is open to the community to attend, with the first part of the meeting focussed on a specific discussion topic, followed by a Have Your Say section, where attendees can raise any issues or questions they may have. The CLT is a key tool in communicating improvements being made locally to the community and increasing public awareness of activity taking place in the neighbourhood.

Neighbourhood Survey – A short neighbourhood survey has been undertaken across the area between January and February 2013. The survey was distributed through the Community Leadership Team mailing list, with members of the Burmantofts Neighbourhood Improvement Board, placed in key community buildings across the ward and sent out through school reading bags. Specific consultation exercises were also undertaken with older people and BME groups.

Community First

A Community First panel has been in place for Burmantofts & Richmond Hill ward. The panel is made up of six local residents and is administered by the Neighbourhood Manager at the panel's request. Local Councillors are also involved in the panel as non voting advisory members to provide support with to the panel and the decision making process. St Vincent's Centre is the panel partner and hosts the Community First page on their website and allows the panel to hold meetings at their centre on York Road. The panel were allocated £203,460 between financial years 2011/12 and 2014/15. This allocation is split into yearly pots and funding available for 2012/13 was £84,680 which supported 40 different projects being delivered across the ward. The Community First Panel have agreed that the Burmantofts & Richmond Hill Neighbourhood Improvement Plan should act as the Community Plan for the area, as there is clear evidence of how local priorities have been identified and there has also been a neighbourhood consultation exercise undertaken to support this. The Community First panel have also agreed to have the same priorities for their funding as outlined in the NIP action plan. This will ensure that funding will be committed to the priorities which need the most investment and will make the greatest impact in the neighbourhood to improve local people's lives.

Funding

Inner East Area Committee has invested funding in the provision of a Neighbourhood Manager to drive improvements forward across the area and to deliver the activities outlined in the action plan. The Area Committee also allocates a ward pot to Burmantofts & Richmond Hill from their annual wellbeing allocation. This funding will be used to be invested in projects and schemes to address the local priorities identified through the Neighbourhood Index and community consultation. The Neighbourhood Manager will also be looking for joint funding opportunities for internal and external funding sources to maximise investment in the local area.

In 2012/13, the Neighbourhood Manager was successful in securing £17,091.49 from East North East Homes Area Panel to carry out a number of joint initiatives including the development of a refuse solution for the Haselwood area of Ebor Gardens and a revised Traffic Regulation Order to put in place for residents of Saxton Gardens, who have experienced a high level of no resident parking issues on the evening and weekend.

Equality Framework

To ensure that all activity which is delivered through the NIP is accessible for all sections of the community, an equality screening process has been undertaken as part of the development of the NIP action plan. Equality considerations will also be taken into account when any projects or events in the neighbourhood are being undertaken and will be done through the project planning process. This is in line with Leeds City Council's commitment to maintain the excellent rating for Equality.

Accountability

The Burmantofts & Richmond Hill Neighbourhood Improvement Plan will be accountable to Inner East Area Committee. A review report will be presented at September Area Committee and a refreshed Neighbourhood Improvement Plan along with an actions and achievements report will be presented at the February / March cycle of Area Committee meetings. The NIP action plan will also be reviewed on a monthly basis through Burmantofts & Richmond Hill Ward Member meetings and also presented to the CLT on a six weekly basis to update them on progress of work being undertaken in their area. The NIP also acts as the local mechanism to deliver the priorities outlined in the Inner East Area Committee Business Plan.

Links to Strategic Partnerships and Priorities

Highlight reports on the progress of the NIP will be fed through to the Area Leadership Team to ensure that strategic service managers are aware of the activity taking place on a neighbourhood level. The actions outline in the NIP action plan also directly contribute towards the City Priority Plan 2011/15, Vision for Leeds 2011/30 and Council's Business Plan 2011/15. The work delivered through the NIP also underpins the principles outlined in the State of the City report.

Partnership working and delivery mechanisms

There are a number of key local partnerships in place which will support the implementation of the NIP action plan:

Burmantofts & Richmond Hill Local Management Team

This meeting is to be re-established to take forward delivery of the NIP action plan. The meeting will be led by the Burmantofts & Richmond Hill Neighbourhood Manager and will be an officer only delivery group involving the following partners:

East North East Homes Leeds

LCC Youth Service

West Yorkshire Police

NHS Leeds

LCC ENE Locality Team

Inner East Cluster

ENEHL Partnerships Team

Membership of the meeting will be expanded to other organisation over the coming months but it is felt at this stage it would be more appropriate to have a smaller group to take forward immediate key actions in the locality.

Burmantofts Neighbourhood Improvement Board

The Burmantofts Neighbourhood Improvement Board (NIB) is chaired by Councillor Peter Gruen and co-chaired by Councillor Asghar Khan. The NIB was established to address issues in the MSOA of Comptons, Sutherlands & Nowells when the area was ranked number one in the city on the Neighbourhood Index profiles. The purpose of the NIB is to bring communities and service providers together to deliver joint solutions to tackle neighbourhood issues which effect communities the most.

Burmantofts & Richmond Hill Crime & Grime Tasking

This six weekly partnership meeting is chaired jointly by the Neighbourhood Manager and Neighbourhood Police Team Inspector. The focus of the meeting is to tackle neighbourhood level crime and crime issues and task partners to deliver actions to put in place sustainable solutions to address the issues. Feedback on the results of quarterly crime and grime days of action, called Operation Champion, are reported back to Tasking. However, the organisation of this activity is carried out by a separate planning group which is co-ordinated by the Neighbourhood Manager.

Key achievements from 2012/13

A number of projects were delivered over the last 12 months which have benefited the local community. Below is an overview of some of the key achievements reached since 1st April 2012:

Increase levels of community confidence

- Community Leadership Team established for the Burmantofts & Richmond Hill Ward in September 2012. Four meetings have been held to date, covering a wide range of topics.
- Support has been provided to the Community First Panel for the Burmantofts & Richmond Hill Ward. The panel have approved funding of just under £84,000 for 40 different projects
- A Burmantofts Gala is being planned for Summer 2013 at the request of local residents. A Steering Group has been established with a wide range of partners and volunteers. Funding has already been secured from Inner East Area Committee and Arcadia towards the cost of running the gala
- Support has been provided to the community led Lark in the Park and Live on the Drive events in the East End Park area
- A number of community users have been assisted to establish activities Ebor Gardens Community Centres, with the levels of use at the centre increasing significantly
- Burmantofts Neighbourhood Improvement Board has been established. The Board, chaired by Councillor Peter Gruen, brings together local residents and partner organisations to work together to develop solutions to neighbourhood issues in the Middle Super Output Area (MSOA) covering Bellbrookes, Comptons, Nowells and Torres
- Assistance has been provided to establish a community café at Lincoln Green Community Centre
- Work undertaken with On The Edge to host an arts event at Lincoln Green Shopping Square

- Richmond Hill Community Centre has been selected to benefit from a government funded programme to install Wifi in community spaces. Richmond Hill C.C. will be the first community centre in the city to benefit from this investment
- West Yorkshire Playhouse have been supported to develop their Burmantofts Stories project with the local community
- A number of statutory and voluntary sector organisations were commissioned to deliver summer holiday activity for young people in a number of local venues

Tackle worklessness including Not in Education, Employment or Training (NEET)

- An IT Suite has been established at Lincoln Green Community Centre, with it's main purpose to provide employment support sessions for local residents
- A Steps to Work course ran from Richmond Hill Community Centre
- Support was provided to NEET Sweep activity, to find out what young people classified as unknown were doing and if they required any support
- A partnership working arrangement has been established with Arcadia to increase the levels of local people employed at the Torre Road site
- Work undertaken with Learning Partnerships to establish sessions at Ebor Gardens and Lincoln Green Community Centres to support NEET young people back into employment and / or training

Improve the local environment

- A project to address ongoing issues with refuse collection and fly tipping has been implemented in the Kitsons, Dents, Oxleys and Clarks area of Richmond Hill. All households received a wheeled bin, with an identifying bin sticker on, so enforcement staff knew which property the bin belongs to. The bin stickers were designed by pupils of Richmond Hill Primary School, who were presented with a certificate of achievement and a prize at an environmental awareness event held at the school in May.
- Environmental Improvement Zone (EIZ) work has commenced in the Nowells and Bellbrookes areas of Burmantofts. Officers of the Locality Team have undertaken perception surveys with local residents in the neighbourhoods and a number of warning letters have been issued. The areas are now being revisited to ensure that any environmental issues highlighted have been addressed.
- The first phase of the flower bed work on Beckett Street is now complete. Flower beds are to be dug in at a number of other locations around the Lincoln Green area, ready to be planted in spring 2013.
- Concrete barriers have been installed on Lincoln Road to prevent issues of fly tipping. Since the barriers have been put in place, there have been no issues, whereas previously, Environmental Services crews had to remove rubbish from the area at least twice a week.
- New bins have been installed in Lincoln Green Shopping Square and a package of environmental improvement are being put together to improve the appearance of the area.

- Probation Service have carried out 20 jobs in the ward which has taken over 1,000 to complete and provided added value of £7,478.40
- Funding has been invested to provide new litter bins outside shops along Ivy Street following a high number of complaints regarding this issues
- Grit bins have been purchased for streets which are not on main gritting routes but have access problems when the weather is icy
- Five community clean ups undertaken across the ward with skips funded through the Tasking budget

Reduce levels of crime and anti social behaviour in Burmantofts & Richmond Hill

- Fortnightly burglary reduction activity continues to take place across the BRH ward, target hardening burglary hotspots. Since April, over 2000 properties have been visited and provided with burglary reduction advice, which has led to a 34% reduction in burglary in the area
- Attack alarms and purse bells purchased for older people living at St Cyprian's Sheltered Housing complex to reduce the fear of crime
- A multi agency steering group has been established to plan and deliver future Operation Champion activities
- BRH Neighbourhood Policing Team Inspector was involved in the summer holiday activity commissioning decision panel, along with Ward Councillors and the neighbourhood manager to ensure that holiday activities were situated in appropriate locations, in line with anti social behaviour data.
- Five Operation Champions have taken place, covering issues including Anti Social Behaviour in tower blocks, youth diversionary activity and activities targeting metal thefts
- Funding has been invested to purchase the Immobilise property marking system, which records property details and can be cross checked if stolen
- Funding has been invested to improve alley gates in the Nowells and Cross Green by installing new locks and self closing devices

Improve physical health and emotional wellbeing

- Support provided to establish East Leeds Debt Forum and develop packages of support for those most in need of financial advice and assistance
- Day of action undertaken in the Rookwoods area to make local people aware of Loan Shark activity taking place in their neighbourhood and increasing awareness of how to report this as well as how to access support
- Funding has been invested into Women's Health Matters to continue running a domestic violence support group for parents

Burmantofts & Richmond Hill Demographic Profile – Census 2011

From the 2011 Census data, the demographic profile of the area is as follows:

- There are a population of 24,843 people living in the area, 49.5% female and 50.5% male
- Population density is significantly higher in BRH compared to the city average – 54.2 people per hectare compare to the Leeds figure of 13.6
- 77.6% of the population of the BRH ward was born in the UK
- The number of residents born outside the UK has increased significantly since the last Census – from 1,542 in 2001 to 5,581 in 2011 – 1,217 born in the EU and 4,364 born elsewhere. Over three quarters of people born elsewhere have moved into the ward within the last 10 years
- 65.3% of the ward population classed themselves as White British and 34.7% are from Black and Ethnic Minority Communities. The BME population has trebled from 11.6% in 2001 to 34.7% in 2011.
- With 2,567 people, 10.3% of the ward population, the African community is the largest BME community in the ward
- 57% of people in the ward have said their religion is Christian, 25.6% of people have no religion, 8.5% of the resident population is Muslim.

Burmantofts & Richmond Hill Neighbourhood Index 2012

The section below provides an overview comparison of the Neighbourhood Index domain data from the 2011 and 2012 profiles, for all the MSOAs which make up the Burmantofts & Richmond Hill Ward. The domains which the Neighbourhood Index covers are as follows:

- | | | |
|---------------------|-------------|-----------|
| • Economic Activity | Low Income | Housing |
| • Health | Environment | Education |
| • Community Safety | | |

By analysing the above domains, this will be used to identify the key areas which are affecting the overall score of the neighbourhood. This will then be used to put in place actions which will create a positive impact and hopefully change around the fortune of the neighbourhood.

From the 2012 Neighbourhood Index profiles, the rankings of the MSOAs which are in the Burmantofts & Richmond Hill area are as follows:

MSOA	Ranking 2012	Ranking 2011	Variation
E02002393: Lincoln Green & Ebor Gardens	4	4	0
E02002394: Harehills – Comptons, Sutherlands, Nowells	2	1	+ 1
E02002399: Osmondthorpe & East End Park	25	26	- 1
E02002404: Cross Green, East End Park and Richmond Hill	3	3	0

The neighbourhoods will be referred to by their MSOA numbers throughout this section.

Economic Activity

Burmantofts

E02002393: This domain area has improved slightly over the last 12 months and is up two places in the Leeds ranking, from 4th to 6th. Levels of local people receiving Incapacity Benefit (620 people, 11.21%) and Lone Parent Income Support (155 people, 2.80%) has dropped but levels of Job Seekers Allowance (728 people, 13.17%) has increased.

E02002494: There has been no changing in the ranking of this domain; it remains static at 2nd on the Leeds rankings. Levels of people receiving incapacity benefit is up by 1.04% from 10.52% to 11.56%, with 582 people in receipt of this benefit. Numbers of people receiving Incapacity Benefit (555) and Lone Parent Income Support (250) have dropped slightly.

Richmond Hill

E02002399: The ranking of this domain has dropped two places, from 23rd to 21st. In this particular MSOA, levels of Job Seekers Allowance claimants has risen, up by 1.29% to 307 claimants. Numbers receiving Incapacity Benefit remains static at 365 claimants and the numbers of people receiving Lone Parent Income Support fell by 0.38% to 180.

E02002404: The economic activity ranking has increased six places to 18th. Levels of people in receipt of Job Seekers Allowance has increased slightly to 549 claimants. The numbers in receipt of Incapacity Benefit (520) and Lone Parent Income Support (195) have fallen slightly compare to the 2011 Neighbourhood Index figures.

Low Income

Burmantofts

E02002393: There has been no change in this domain ranking and remains 2nd in Leeds. The numbers of households receiving in work benefits has increased significantly from 384 in 2011 to 508 in 2012. Levels of Children in Workless House holds (538), 60+ Households in Receipt of Benefits (462) and Court order payments (558) have all remained at similar levels as the 2011 data.

E02002494: As with the above area, there has been no change in the domains ranking, staying at 3rd. The number of Children in Workless Households has increased by 104 from 671 in 2011 to 775 in 2012. Households receiving in work Benefits is also up by 80, from 291 to 371. 60+ households in receipt of benefits is also up slight from 398 to 404, a rise of 6 people. The only indicator to reduce is the number of Court Order Payments, down by two cases.

Richmond Hill

E02002399: The low income domain remains ranked at 27th. However, number of children in workless households rose by 34 to 539 and household receiving in work benefits has also risen by 32 to 219 recipients. 60+ households in receipt of benefits and court order payments both fell by four to 319 and 246 respectively.

E02002404: The Low Income ranking has also improved in the area, moving up three places from 9th to 12th. This is mainly due to the reduction in number of children in workless households, a reduction of 32 to 564. Despite this reduction, the number of household in receipt of in work benefits (312), 60+ households in receipt of benefits (515) and number of court payment orders (645) have all increased.

Housing

Burmantofts

E02002393: This ranking has dropped three places from 11th to 8th. There has been an improvement in the number of homes which have been left empty over 90 days, this has reduced by 1.82%, bringing this level more in line with the city average. Housing turnover has slightly reduced in the area from 24.14% to 23.67%. However, the average house price in the area fell by over £2,000, from £65,809 in 2011 to £63,421 in 2012.

E02002494: This domain has dropped three places, from 10th in 2011 to 7th in 2012. The average purchase price in the area has dropped by £6,317, from £75,231 to £68,914. Housing turnover (24.80%) and number of properties left empty over 90 days (8.89%) have also slightly increased on the previous years figures.

Richmond Hill

E02002399: The domain in this area has fallen by one place over the last 12 months to 16th. House prices have fallen by an average of £5,322 to £77,555. Housing turnover rate has increased by 1.41% to 13.23% and the number of homes left empty over 90 day has remained at a similar rate to last year at 6.13%.

E02002404: Average house prices have dropped by £5,167 to £86,412. Levels of housing turnover (34.77%) and number of empty properties over 90 days (13.71%) have both reduced but are still extremely high and result in this area still remaining 3rd in the Leeds ranking.

Health

Burmantofts

E02002393: The health domain has improved in the area, up by eight places, from 26th in 2011 to 34th in 2012. Levels of Circulatory Disease Mortality have dropped from 115.34 cases per 100,000 population, to 97.63 cases per 100,000, this is a decrease of 17.71 cases. Cancer Mortality has also reduced, from 154.76 cases per 100,000 to 138.44 per 100,000, a reduction of 16.32. Levels of low birth weight remains at a similar level to the 2011 figures and the number of adults receiving community based services through Adult Social Care has also dropped, from 117 in 2011 to 78 in 2012.

E02002494: The health domain is the one that has fallen the most places in the last 12 months, it has slipped 14 places, from 17th to 3rd in the Leeds rankings. The levels of Circulatory Disease Mortality has increased the most, up 28.55 cases per 100,000, from 133.42 to 161.97. The number of Cancer Mortality cases has also increased by 10.60 per 100,000 from 168.23 to 178.83. Levels of low birth weight remain the same and levels of adults receiving community services from Adult Social Care have reduced by 35, from 111 to 76.

Richmond Hill

E02002399: Health in this MSOA has seen the biggest improvement across all of the domains, up 10 places to a ranking of 41st. Levels of circulatory disease mortality (57 cases per 100,000), cancer mortality (190.07 cases per 100,000), low birth weight (6.25 cases) and number of Adult Social care assistance provided in the area (62) have all fallen compared to last years statistics.

E02002404: Health in the area is now ranked 6th from the indicator data. Circulatory Disease Mortality has fallen to 91.74 cases per 100,000, a reduction of 14.37. Cases of low birth weight (12.86 cases) and numbers receiving services through Adult Social care (80) have also fallen. However, the numbers of cases of Cancer Mortality has increased by 37.76 to 174.58 per 100,000.

Environment

Burmantofts

E02002393: The ranking of this domain has fallen slightly from the previous year by two places from 18th to 16th. Numbers of fly tipping cases have reduced by 40 incidents, from 68 to 28. There is no data available on MSOA for numbers of graffiti incidents, so this cannot be analysed against last years figure of 53 incidents. The number of waste incidents have increase by 33 from 77 to 110 but this is due to increased resident awareness about how to report waste in gardens, fly tipping and other environmental issues.

E02002494: This domain has reduced by two places, from 9th to 7th. Levels of environmental issues have reduced in this area but there are still high levels of fly tipping, 46 incidents – a reduction of three from 2011, and waste issues, 327 – a reduction of 73 from 2011.

Richmond Hill

E02002399: Environment has fallen two places, from 20th to 18th. Despite the fall in ranking, both the number of fly tipping incidents (37) and number of waste issues (114) have reduced to those dealt with and reported in last years figures.

E02002404: Environment has moved up two places to 9th. There also been a reduction in both fly tipping incidents, down by 88 to 47, and waste issues, down by 114 to 212.

Education

Burmantofts

E02002393: This domain area as improved by eight places, from 16th to 24th. Levels of persistent absenteeism have dropped 3.62%, levels of attainment across both Foundation Stage (46.59%) and Key Stage 2 (69.86%) have increased along with the

levels of NEETs in the area, this has fallen by 3.79%. The only area which has deteriorated is the Key Stage 4 attainment levels, these have fallen by 7.29%, from 37.29% to 30% over the 12 month period.

E02002494: The ranking for this area has dropped four places, from 6th to 2nd. This is largely to do with the significant fall of young people achieving Key Stage Level 2, a fall of 17.70% on 2011 figures. All other indicators have improved under this domain; persistent absenteeism has fallen 3.51%, attainment levels in Foundation Stage (42.86%) and Key Stage 4 (32%) have increased and the levels of NEETs have also fallen slightly, now at 9.75% (21 young people).

Richmond Hill

E02002399: This domain is up two places to 28th. Levels of persistent absenteeism has fallen by 3.04% to 33 cases. NEETs have also fallen by 2.62% to 17. Attainment has improved for both Foundation Stage, up by 4.80% to 39.62% and Key Stage 2, an increase of 4.34% to 71.07%, but unfortunately has fallen for Key Stage 4, from 41.10% to 37.66%.

E02002404: This is the domain which has reduced in ranking more than any other in the MSOA – it has fallen by 10 places to 5th. Improvement levels in the area remain pretty much static in comparison to last year resulting in the areas ranking being lower down the Leeds ranking table. Persistent absenteeism(13.43%) and NEETs(15.87%) in the area have increased compared to last years Index data. Attainment levels have improved for Foundation Stage (43.53%) and Key Stage 2 (55.10%) but reduced slightly for Key Stage 4 (36.51%)

Community Safety

Burmantofts

E02002393: The crime domain has fallen two places from 5th to 3rd. There has been a massive decrease in community disorders, a fall of 246 incidents, from 1,058 to 812 in 12 months. Acquisitive property crime has also fallen, from 734 to 671, a reduction of 63 incidents. Environmental crimes have increased slightly by four incidents and crimes against individuals has had the biggest rise, up 56 incidents, from 447 to 503.

E02002494: The Community Safety domain has increased three places, from 3rd to 6th. Numbers of incidents have fallen across acquisitive property crime, down 167 from 727 to 580, environmental crimes, down 82 from 247 to 165, and community disorders, down by 314 from 919 to 605. The only area to increase under this domain is crimes against individuals, up 16 incidents.

Richmond Hill

E02002399: Community safety has increased in the rankings by seven places from 31st to 38th. All indicators have improved significantly across this particular domain; A reduction of 116 acquisitive property crimes to 362, a reduction of 33 environmental crimes to 112, crimes against individuals now stands at 223, a reduction of 124 incidents, and community disorders are down by 129 offences to 346.

E02002404: The ranking for this domain stays at 9th. All types of incidents have reduced across the area compared to last year and this domain continues to improve, with the biggest change being in the numbers of community disorders, down by 166 offences.

Burmantofts & Richmond Hill Neighbourhood Survey Results 2013

To gather local residents views about the improvements which they'd like to see in their area, a short neighbourhood survey was compiled. This asked local people to rank their top two priorities under the following headings:

- Tackling crime & anti social behaviour
- Improving the cleanliness of the environment
- Providing more community activities
- Getting people into work or training
- Health & wellbeing

The survey also asked people if they had an appetite for getting involved in more community activities such as community events, meetings or clean ups.

143 surveys were returned from across the area. Survey's were distributed through school reading bags, left in community venues for local residents to pick up, sent through the Burmantofts & Richmond Hill community mailing list and residents groups were also asked to disseminate the questionnaire to their members.

The section below describes the top two issues which local people would like to see tackled in their neighbourhood under each heading:

Tackling crime & Anti Social Behaviour

- Burglary – 92 people prioritised this
- Youth Nuisance - 65 people prioritised this

Improving the cleanliness of the environment

- Dog fouling - 108 people prioritised this
- Fly tipping - 60 people prioritised this

Providing more community activities

- Improved parks & play areas – 81 people prioritised this
- More activities for young people – 79 people prioritised this

Getting people into work or training

- Programmes to support young people into training and employment - 79 people prioritised this

- More courses being delivered locally – 71 people prioritised this

Health & wellbeing

- Sports sessions – 64 people prioritised this
- Healthy eating sessions – 57 people prioritised this

In terms of local people becoming more involved in their local community and finding out more about what is happening where they live, the response was as follows:

- 52 people thought that a community newsletter should be introduced
- 34 people wanted to get involved with community events
- 30 people wanted to attend and interested in attending community meetings
- 26 people thought that more community clean ups should be introduced across the ward

With the information provided above, the action plan will be directed to address the key issues highlighted by local people, along with the supporting statistical information.

Burmantofts & Richmond Hill Neighbourhood Improvement Action Plan

The action plan below has been developed using the information gathered as part of the residents consultation, Neighbourhood Index statistics and views of local Ward Members to ensure that the plans is delivering actions to meet the needs of the neighbourhood. All activity listed below will be delivered by the East North East Area Support Team in partnership with other service or community partners.

Reduce levels of crime and Anti Social Behaviour						
Priority	Action to be taken	Delivery Partners	Success measure	Outputs	Resources	Delivery Timescale
Reduce number of residents complaints and improve residents perceptions around levels of youth nuisance	Put in place a programme of activities for young people across school holidays	Young People's Service Providers (statutory and voluntary sector)	Resident's perceptions of youth nuisance reduce. Young people are fully engaged with wide range of	No. of young peoples activities provided No. of young people engaged with activities	Wellbeing, Inner East Cluster	1 st April 13 – 31 st March 14

			activities on offer in the right locations at the right time across the ward			
	Continue to undertake burglary reduction activity across the ward. Targeting hotspot areas and perpetrators	West Yorkshire Police, Safer Leeds, East North East Homes Leeds	Residents feel safer in their homes and fear of burglary is reduced	No. of burglaries reduced % of crime reduction	Staff resources	1 st April 13 – 31 st March 14
	Undertake a campaign to reduce the levels of car crime across the neighbourhood	West Yorkshire Police	Reduced levels of fear of and incidents of car crime	No. of car crimes reduced % of crime reduction	Staff resources	1 st April 13 – 31 st March 14
	Put in place parking permit scheme / waiting restrictions in areas which have had significant problems with commuter parking and safety concerns	LCC Highways, LCC Parking Enforcement	Reduced number of complaints regarding car parking from local people	No. of revised parking programmes put in place No. of complaints reduced from local people	Wellbeing, Area Panel, LCC Highways	1 st April 13 – 31 st March 14
	Hold four Operation	West Yorkshire Police, ENEHL,	Co-ordinated partnership	No. of operations	Staff resources, Wellbeing	1 st April 13 – 31 st March 14

	Champion days of action across the ward	LCC ENE Locality Team, LASBT, LCC Youth Service	activity which is being undertaken to address key neighbourhood issues	undertaken No. of partners involved No. of activities delivered as part of the days of action		
	Support local residents to establish a Neighbourhood Watch in their community	West Yorkshire Police, local residents groups	Residents feel safer in their communities	No. of neighbourhood watch programmes established No. of residents engaged in neighbourhood watch No. of local people feeling safer in their community	Staff resources	1 st April 13 – 31 st March 14

Improve the local environment

Priority	Action to be taken	Delivery Partners	Success measure	Outputs	Resources	Delivery Timescale
Encourage local people to take pride in their community and keep their neighbourhood clean	Develop keep Burmantofts and Richmond Hill campaigns	LCC ENE Locality Team East North East Homes Leeds	Cleaner neighbourhood, with increased levels of community pride	No. of reduced levels referrals to Locality Team No. of prosecutions going forward due to increased reporting and intelligence from	Wellbeing	1 st April 13 – 31 st March 14

				residents		
	Implement a programme of subway improvements involving local people	Seagulls, local community, LCC ENE Locality Team	Enhanced and cleaner subways which people feel safer to use	No. of subways improved No. of local residents involved in community workshops	Wellbeing	1 st April 13 – 31 st March 14
Improve local parks and play areas across the ward	Carry out a review of all green spaces and play areas used by the community and put together a programme of improvement and investment	LCC Parks & Countryside	Improved communal areas which are safe and clean for all the community to enjoy	No. of greenspaces improved No. of residents using the greenspaces	LCC Parks & Countryside, Wellbeing, Area Panel, external funding sources	1 st April 13 – 31 st March 14
Address local people main environmental concern – dog fouling	Undertake specific activities in hotspot areas to reduce the levels of dog fouling inc. prevention campaigns, targeted patrols and increased signage	LCC ENE Locality Team	Cleaner neighbourhood, with increased levels of community pride	No. of reduced levels referrals to Locality Team No. of prosecutions going forward due to increased reporting and intelligence from residents	Wellbeing	1 st April 13 – 31 st March 14
Provide more opportunities for local people to be involved in keeping their	Establish a programme of monthly community clean ups across the	BRH Tasking Team, local residents	Cleaner neighbourhood, with increased levels of community pride	No. of community clean ups provided No. of residents engaged in the	Wellbeing	1 st April 13 – 31 st March 14

neighbourhood clean	ward, targeting hotspot areas			activity		
Develop and implement a number of community environmental projects as part of the Sustainable Communities Investment Programme for Cross Green	Undertake a participatory budgeting process to allocate an environmental funding to local priorities	LCC Regeneration Projects Team	Improved local environment meeting community needs	No. of community ideas put forward No. of projects funded	LCC, Green Deal	1 st April 13 – 31 st March 14
	Work with the dedicated private rented sector enforcement team to tackle problem properties	LCC Private Rented Sector Enforcement Team, LCC ENE Locality Team	Increased levels of community pride	No. of problem properties tackled No. of improvements undertaken	New Homes Bonus	1 st April 13 – 31 st March 14

Increase levels of community confidence

Priority	Action to be taken	Delivery Partners	Success measure	Outputs	Resources	Delivery Timescale
Improve communication with local residents	Develop a Neighbourhood Newsletter to be sent to key contacts and placed in community facilities	Local residents	Communities are aware of the improvements taking place in their neighbourhood and feeling part of improving	No. of editions of newsletters produced No. of copies circulated	Wellbeing	1 st April 13 – 31 st March 14

			their community			
	Continue to promote and support local decision making through the Community Leadership Team for the ward	Local residents	Communities are aware of the improvements taking place in their neighbourhood and feeling part of improving their community	No. of CLTs held No. of residents attending the meeting	Wellbeing	1 st April 13 – 31 st March 14
Promote and encourage use of local community centres	Support community organisations to access community centres to provide activities which there is a local need for	LCC Strategy & Commissioning	Inner East Area Committee Community Centres are vibrant and thriving hubs of community activity	No. of new groups using the community centre	Staff resources	1 st April 13 – 31 st March 14
Ensure Community First funding for the ward is maximised	Work with panel members to promote Community First funding to local group	Community First Panel	Local residents oversee the investment of funding to address neighbourhood priorities	No. of organisations supported Amount of funding allocated to support local projects	Community First, plus wide range of match funding sources	1 st April 13 – 31 st March 14
Provide a range of summer galas for the local community	Hold the first Burmantofts Community Gala Support Lark in the Park and Live on the Drive	Community Unity, local residents, ENEHL, Leeds Refugee Forum, West Yorkshire Police, LCC	Create community cohesion by bringing together local people at positive	No. of gala days held No. of residents in attendance	Wellbeing, Area Panel, Community First, fundraising, volunteer time	June 13 – September 13

		Youth Service, Burmantofts Senior Action	community activities			
--	--	--	-------------------------	--	--	--

Reduce levels of worklessness and NEETs						
Priority	Action to be taken	Delivery Partners	Success measure	Outputs	Resources	Delivery Timescale
Provide opportunities to local people to access employment and training opportunities	Opportunities fairs to be held in both Burmantofts and Richmond Hill for local people to employment and training	LCC Employment & Skills, Job Centre Plus, Leeds City College, local businesses	Information provided on employment and training provided in local settings accessed by local residents	No. of opportunity events held No. of organisations involved No. of people in attendance	Staff resources, wellbeing	April 13 – September 13
	Commission service providers to deliver CV writing, job search and application support sessions from Richmond Hill, Lincoln Green and Ebor Gardens Community Centres	LCC Employment & Skills, Job Centre Plus, Leeds City College, local businesses	Residents are supported to build confidence and skills to access training and employment opportunities	No. of sessions commissioned No. of attendees	Wellbeing	1 st April 13 – 31 st March 14
Continue to work with businesses situated in the ward to promote employment	Ensure that opportunities are advertised and recruited locally to give local residents the	Arcadia, Job Centre Plus	Residents access work that is available in their community	No. of opportunities created No. of LS9 residents employed		1 st April 13 – 31 st March 14

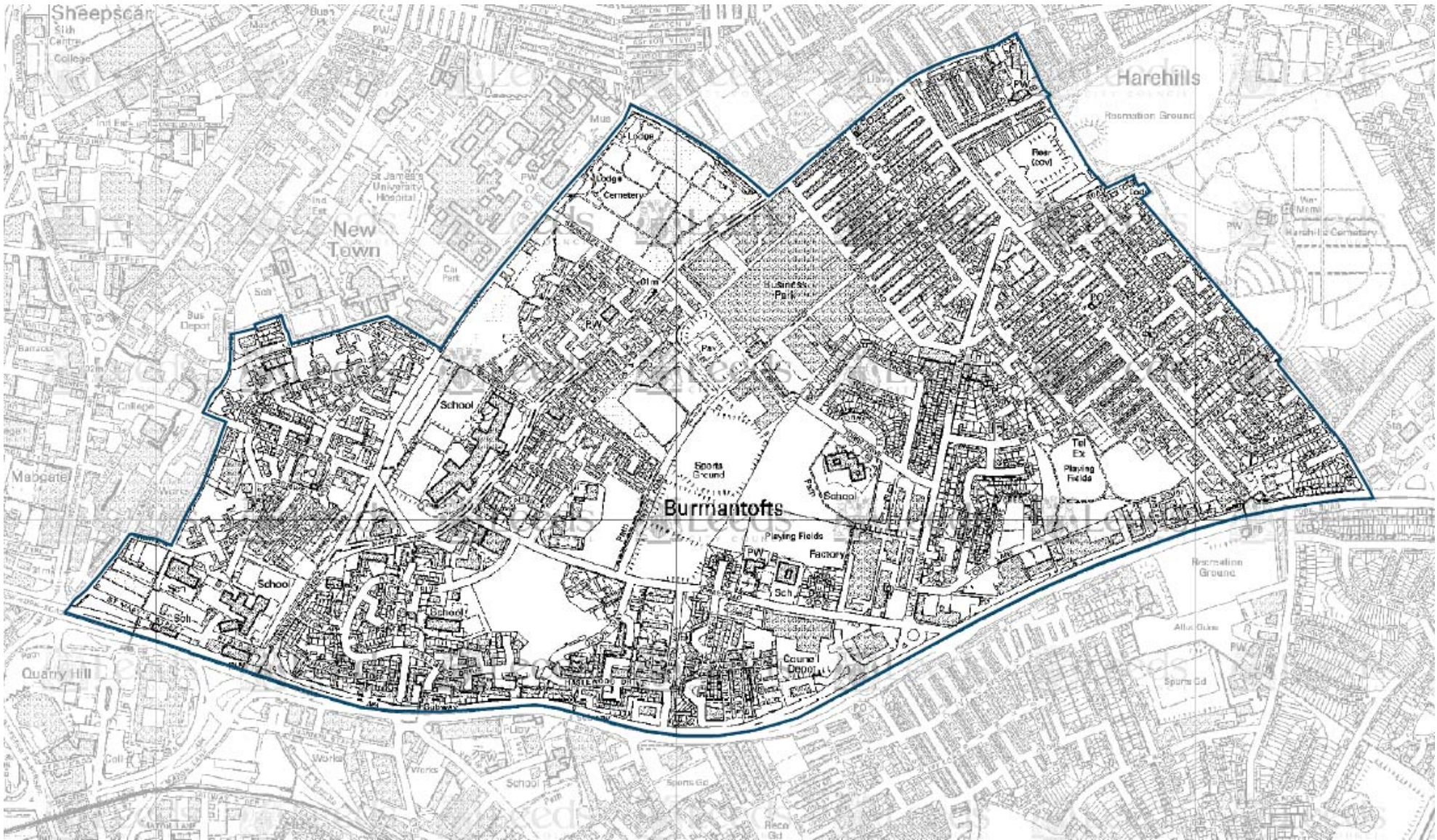
opportunities	opportunity to gain employment					
---------------	--------------------------------	--	--	--	--	--

Improve physical health and emotional wellbeing						
Priority	Action to be taken	Delivery Partners	Success measure	Outputs	Resources	Delivery Timescale
Provide support to local people who may be in financial difficulties	Continue to support the work of East Leeds Debt Forum to provide a range of activities and event to support local people who are most in need	East Leeds Debt Forum	Residents are aware of how to access support to solve debt issues	No. of local people supported	Staff resources	1 st April 13 – 31 st March 14
Support vulnerable families	Support the development of packages of support for vulnerable families identified through Families First data	LCC Children's Services, schools, LASBT, West Yorkshire Police, IGEN, LCC Youth Srvce, ENEHL	Vulnerable families provided with a package of support to improve their lives	No. of families supported No. of cases completed from Families First list for the ward	LCC Children's Services, staff resources	1 st April 13 – 31 st March 14
Support local sports clubs in the area	Put together a programme for young people which will result in them becoming more involved with their community	LCC Sport & Active Lifestyles, East Leeds Cricket Club, East Leeds Community Sport Club, Market District	New and additional membership generated at local community sports clubs	No. of sessions held No. of young people engaged No. of new members at community sports clubs	Wellbeing	July 13 – September 13

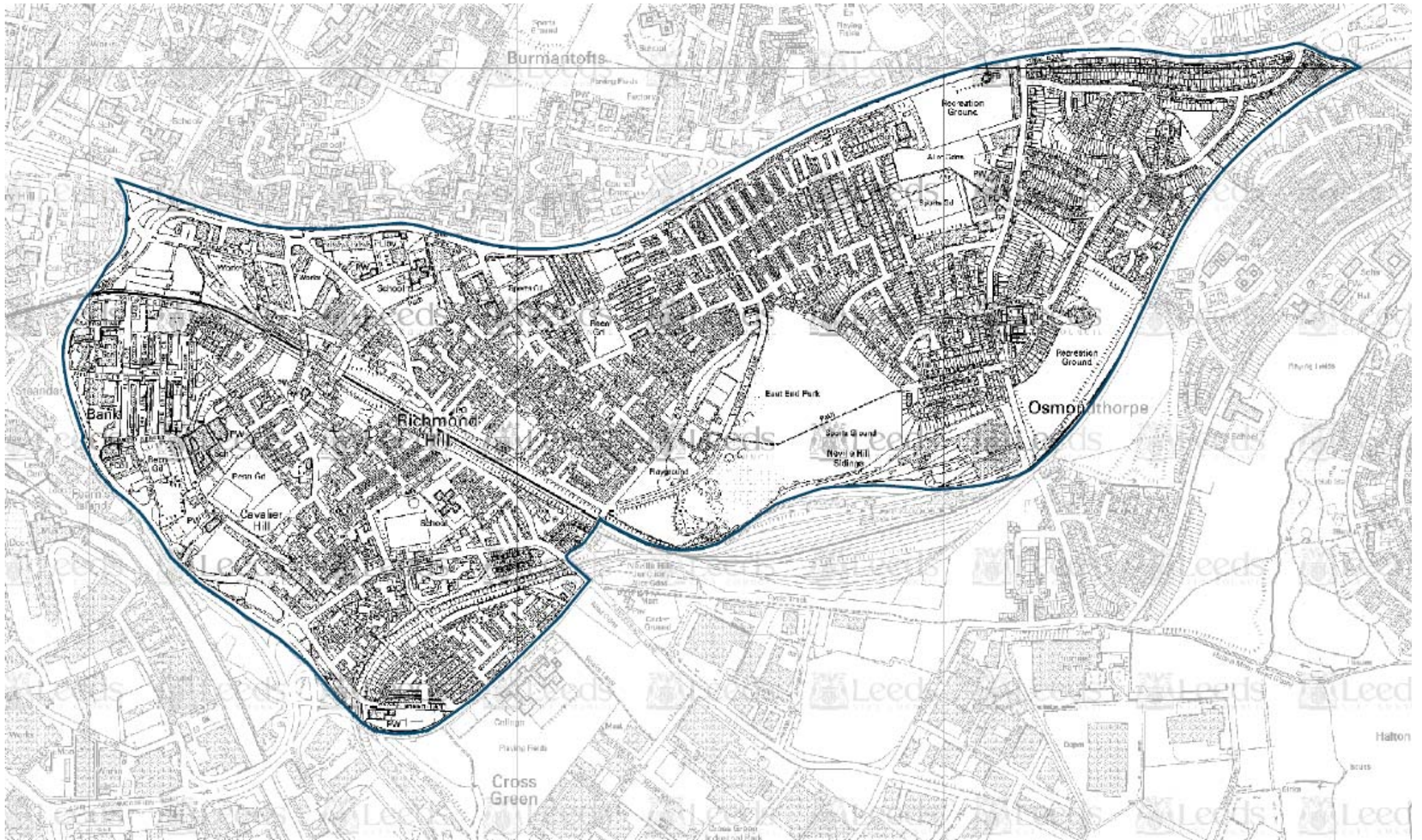
	sports clubs	Boxing Club				
--	--------------	-------------	--	--	--	--

DRAFT

Appendix 1 - Map of Burmantofts Priority Neighbourhood



Appendix 2 - Map of Richmond Hill Priority Neighbourhood

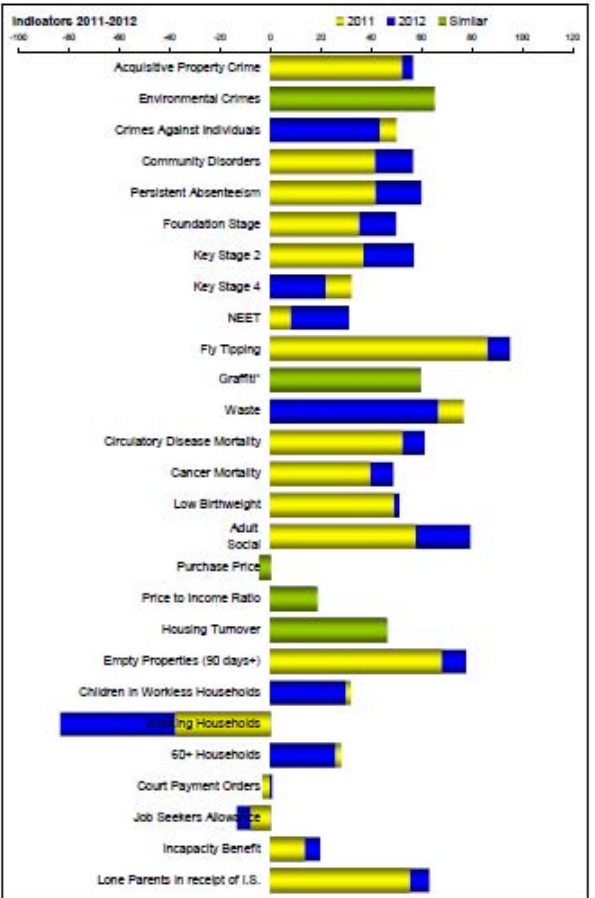
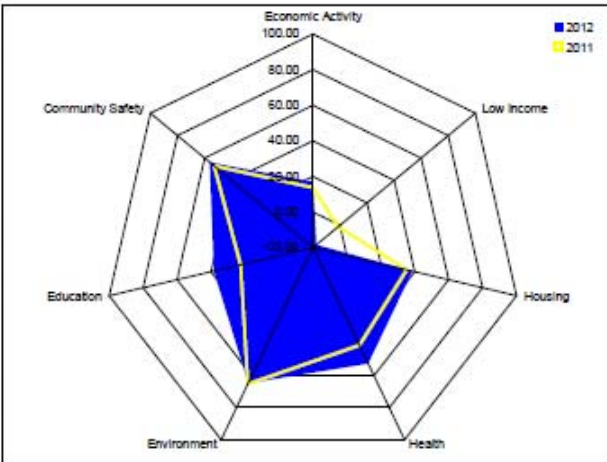
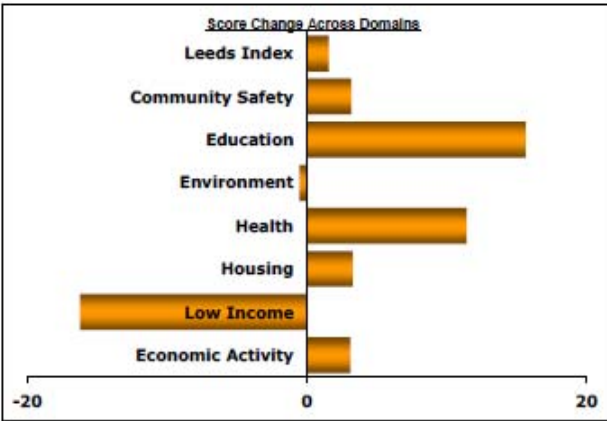




Leeds Neighbourhood Index

Domain Summary	2011		2012		Change	
	Rank	Score	Rank	Score	Rank	Score
Economic Activity	4	13.85	6	16.97	2	3.12
Low Income	2	-1.33	2	-17.53	0	-16.20
Housing	11	35.35	8	38.82	-3	3.27
Health	28	41.02	34	52.43	8	11.41
Environment	18	65.24	16	64.72	-2	-0.52
Education	16	22.72	24	38.37	8	15.65
Community Safety	5	53.07	3	56.23	-2	3.16
Leeds Index	4	4.87	4	6.41	0	1.54

Indicators	2011		2012		Change	
	Data	Score	Data	Score	Data	Score
Job Seekers' Allowance	12.56%	-7.57	13.17%	-13.31	0.61	-5.74
Incapacity Benefit	12.01%	13.41	11.21%	19.84	-0.80	6.24
Lone Parent Income Support	3.41%	55.17	2.80%	63.14	-0.61	7.98
Children in Workless Households	522	31.90	538	29.80	16	-2.09
Households Receiving In-Work Benefits	384	-37.64	508	-83.30	124	-45.76
60+ Households in Receipt of Benefits	449	28.13	462	25.74	13	-2.39
Court Payment Orders	578	-3.05	558	0.76	-20	3.82
Average Purchase Price	£85,809	-3.60	£83,421	-4.27	-£2,388	-0.67
Price / Income Ratio	4.45	18.66	4.40	17.91	-0.05	-0.75
Housing Turnover	24.14%	45.01	23.67%	46.30	-0.47	1.29
Empty Homes (90+ days)	8.27%	67.85	6.45%	77.88	-1.82	9.83
Circulatory Disease Mortality	115.34	52.29	97.63	61.19	-17.71	8.90
Cancer Mortality	154.76	39.58	138.44	48.80	-16.32	9.22
Low Birthweight	8.25	48.93	8.03	51.10	-0.2	2.17
Adult Social Care	117	57.54	78	79.33	-39	21.79
Fly Tipping	68	55.98	28	95.10	-40	9.12
Graffiti	53	59.61	53	59.61	*	*
Waste Issues	77	76.80	110	66.59	33	-10.21
Persistent Absenteeism	12.05%	41.50	8.43%	59.98	-3.62	18.48
Foundation Stage	35.79%	35.17	46.59%	49.90	10.80	14.73
Key Stage 2	58.57%	36.85	69.86%	56.86	11.29	20.01
Key Stage 4	37.29%	32.22	30.00%	21.83	-7.29	-10.39
NEET	15.17%	7.90	11.38%	31.24	-3.79	23.34
Acquisitive Property Crime	734	52.06	671	56.75	-63	4.68
Environmental Crimes	182	65.10	188	64.25	4	-0.85
Crimes Against Individuals	447	50.02	503	43.29	56	-6.73
Community Disorders	1,058	41.32	812	56.64	-246	15.32



Notes:
 * Due to changes in the service, small area data on the number of graffiti jobs cleared by the Council is not available for 2011/12. To maintain the integrity of the Neighbourhood Index the data for 2010/11 has been rolled forward into the system so the change appears as zero.

Domain Summary: Shows the rank, score and changes for each domain, for each year.

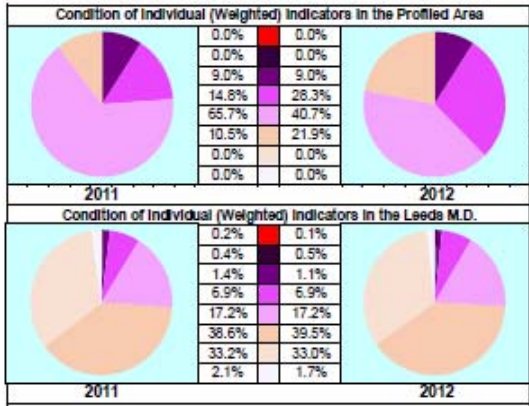
Indicators: Shows the score, underlying data and changes for each indicator, for each year.

Bar Chart (Score Change Across Domains): A graphical representation of the change in the domain scores between this year and last. N.B. an increase in score indicates improvement, a decrease in score indicates deterioration.

Bar Chart (Indicators 2011-2012): A graphical representation comparing the indicator scores for each year. N.B. indicators showing minimal change are represented by green bars.

Spidergram: A graphical representation comparing the domain scores for each year.

Pie Charts: Graphical representations of the weighted proportions of individual indicators falling into each band.



Indicator and Domain Index Scores	Indicator and Domain Score Changes
Least Successful	Most Deteriorated
▼	▼
▼	▼
▼	▼
Average	Static
▼	▼
Most Successful	Most Improved

Data cells and pie diagrams are coloured to highlight levels of significance as used elsewhere in the index (from the City average in the case of scores or "No Change" i.e. Zero, in the case of score changes).

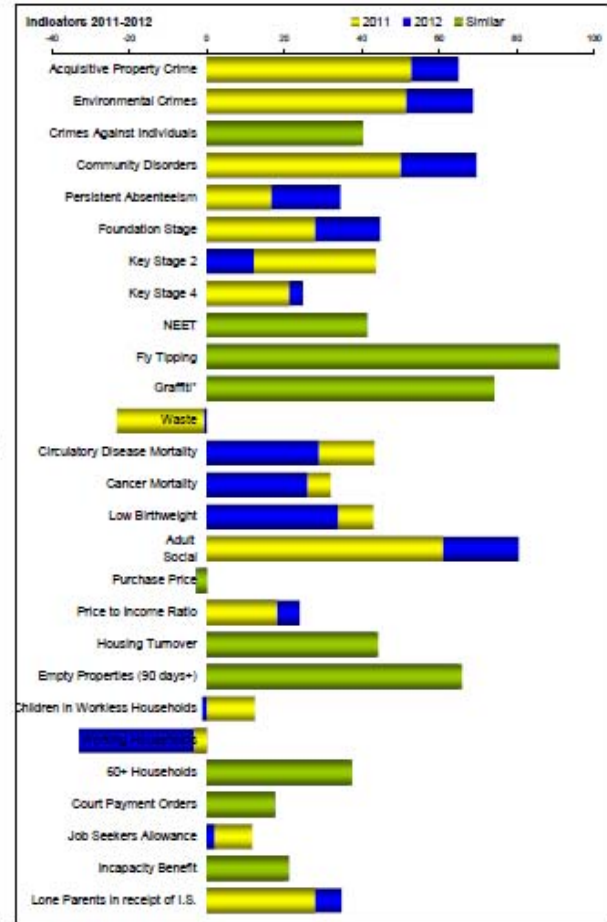
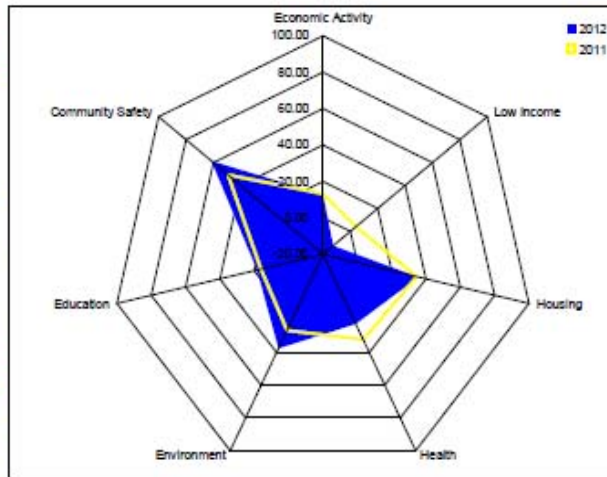
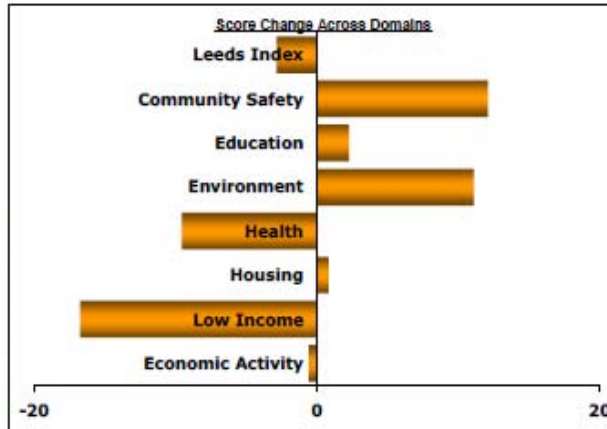
Whilst the concept of "significance" highlights statistically important values within a dataset it must be noted that the bands are unique to each indicator and domain for each year, or period of comparison in the case of "change".



Leeds Neighbourhood Index

Domain Summary	2011		2012		Change	
	Rank	Score	Rank	Score	Rank	Score
Economic Activity	3	13.25	3	12.88	0	-0.57
Low Income	3	4.16	3	-12.55	0	-16.70
Housing	10	34.73	7	35.55	-3	0.82
Health	17	32.12	3	22.59	-14	-9.53
Environment	9	28.43	7	37.50	-2	11.07
Education	6	16.09	2	18.37	-4	2.28
Community Safety	3	49.41	6	61.50	3	12.09
Leeds Index	1	-2.05	2	-4.90	1	-2.85

Indicators	2011		2012		Change	
	Data	Score	Data	Score	Data	Score
Job Seekers' Allowance	10.52%	11.71	11.58%	1.91	1.04	-9.80
Incapacity Benefit	11.19%	19.83	11.02%	21.15	-0.17	1.33
Lone Parent Income Support	5.49%	27.82	4.96%	34.73	-0.53	6.91
Children in Workless Households	871	12.42	775	-1.18	104	-13.59
Households Receiving In-Work Benefits	291	-3.32	371	-32.84	80	-29.52
50+ Households in Receipt of Benefits	368	37.50	404	36.40	6	-1.10
Court Payment Orders	472	17.18	470	17.56	-2	0.38
Average Purchase Price	£75,231	-0.35	£98,914	-2.73	-£23,317	-1.78
Price / Income Ratio	4.41	18.06	4.80	23.88	0.39	5.82
Housing Turnover	24.47%	44.12	24.80%	43.22	0.33	-0.91
Empty Homes (90+ days)	8.65%	65.79	8.89%	64.49	0.24	-1.29
Circulatory Disease Mortality	133.42	43.21	161.97	28.86	28.55	-14.35
Cancer Mortality	168.23	31.97	178.83	25.98	10.60	-5.99
Low Birthweight	8.86	43.02	9.81	33.83	0.9	-9.19
Adult Social Care	111	60.89	76	80.45	-35	19.55
Fly Tipping	49	90.28	46	90.84	-3	0.57
Graffiti*	34	74.09	34	74.09	*	*
Waste Issues	400	-23.13	327	-0.55	-73	22.58
Persistent Absenteeism	16.93%	16.56	13.42%	34.49	-3.51	17.93
Foundation Stage	30.43%	27.88	42.86%	44.81	12.43	16.95
Key Stage 2	62.32%	43.50	44.62%	12.12	-17.70	-31.38
Key Stage 4	29.48%	21.11	32.00%	24.68	2.51	3.58
NEET	9.99%	39.83	9.75%	41.32	-0.24	1.49
Acquisitive Property Crime	727	52.59	560	65.00	-167	12.41
Environmental Crimes	247	51.28	165	68.72	-82	17.45
Crimes Against Individuals	528	40.29	544	38.37	16	-1.92
Community Disorders	919	49.88	805	69.54	-314	19.56



Notes:

* Due to changes in the service, small area data on the number of graffiti jobs cleared by the Council is not available for 2011/12. To maintain the integrity of the Neighbourhood Index the data for 2010/11 has been rolled forward into the system so the change appears as zero.

Domain Summary: Shows the rank, score and changes for each domain, for each year.

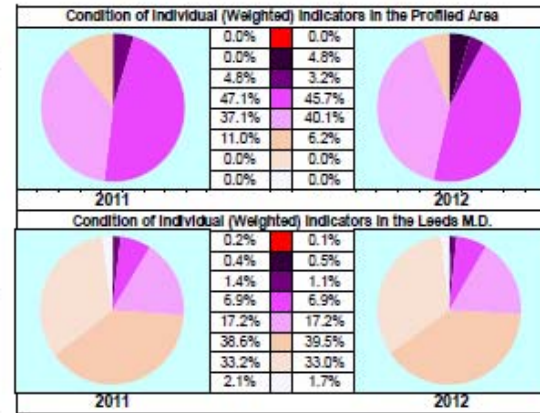
Indicators: Shows the score, underlying data and changes for each indicator, for each year.

Bar Chart (Score Change Across Domains): A graphical representation of the change in the domain scores between this year and last. N.B. an increase in score indicates improvement, a decrease in score indicates deterioration.

Bar Chart (Indicators 2011-2012): A graphical representation comparing the indicator scores for each year. N.B. indicators showing minimal change are represented by green bars.

Spidergram: A graphical representation comparing the domain scores for each year.

Pie Charts: Graphical representations of the weighted proportions of individual indicators falling into each band.



Indicator and Domain Index Scores	Indicator and Domain Score Changes
Least Successful	Most Deteriorated
▼	▼
▼	▼
▼	▼
Average	Stable
▼	▼
Most Successful	Most Improved

Data cells and pie diagrams are coloured to highlight levels of significance as used elsewhere in the index (from the City average in the case of scores or 'No Change' i.e. Zero, in the case of score changes).

Whilst the concept of 'significance' highlights statistically important values within a dataset it must be noted that the bands are unique to each indicator and domain for each year, or period of comparison in the case of 'change'.



Leeds Neighbourhood Index

E02002399: Osmondthorpe, East End Park

Domain Summary	2011		2012		Change	
	Rank	Score	Rank	Score	Rank	Score
Economic Activity	23	40.11	21	37.21	-2	-2.90
Low Income	27	34.66	27	28.74	0	-5.92
Housing	17	49.16	16	53.35	-1	4.19
Health	31	43.91	41	57.20	10	13.30
Environment	20	68.93	18	72.20	-2	5.26
Education	26	32.85	28	42.29	2	9.43
Community Safety	31	72.22	38	82.04	7	9.82
Leeds Index	26	31.04	25	34.68	-1	3.65

Indicators	2011		2012		Change	
	Data	Score	Data	Score	Data	Score
Job Seekers' Allowance	6.04%	54.06	7.33%	41.85	1.29	-12.22
Incapacity Benefit	8.63%	39.88	8.72%	39.19	0.09	-0.68
Lone Parent Income Support	4.68%	38.47	4.30%	43.48	-0.38	5.01
Children in Workless Households	505	34.12	539	29.87	34	-4.44
Households Receiving In-Work Benefits	187	35.06	219	23.25	32	-11.81
60+ Households in Receipt of Benefits	323	51.29	319	52.02	-4	0.74
Court Payment Orders	250	59.54	246	60.31	-4	0.76
Average Purchase Price	£82,877	1.20	£77,565	-0.29	-£5,322	-1.50
Price / Income Ratio	4.05	12.69	5.20	29.85	1.15	17.16
Housing Turnover	11.82%	78.70	13.23%	74.86	1.41	-3.84
Empty Homes (90+ days)	6.20%	79.05	6.13%	79.42	-0.07	0.37
Circulatory Disease Mortality	80.04	70.04	67.00	81.61	-23.04	11.58
Cancer Mortality	200.85	13.54	190.07	19.63	-10.78	6.09
Low Birthweight	6.75	63.47	6.24	68.41	-0.5	4.94
Adult Social Care	113	59.78	62	88.27	-51	28.49
Fly Tipping	60	87.79	37	92.92	-23	5.13
Graffiti*	28	78.66	28	78.66	*	*
Waste Issues	133	59.47	114	65.35	-19	5.88
Persistent Absenteeism	11.17%	46.00	8.13%	61.54	-3.04	15.55
Foundation Stage	34.82%	33.85	39.62%	40.39	4.80	6.55
Key Stage 2	66.67%	51.20	71.01%	58.90	4.34	7.70
Key Stage 4	41.10%	37.65	37.66%	32.75	-3.44	-4.90
NEET	10.98%	33.73	8.36%	49.88	-2.62	16.14
Acquisitive Property Crime	478	71.09	362	79.71	-116	8.62
Environmental Crimes	145	72.97	112	80.00	-33	7.02
Crimes Against Individuals	347	62.04	223	76.93	-124	14.90
Community Disorders	475	77.64	346	85.87	-129	8.04

Notes:
 * Due to changes in the service, small area data on the number of graffiti jobs cleared by the Council is not available for 2011/12. To maintain the integrity of the Neighbourhood Index the data for 2010/11 has been rolled forward into the system so the change appears as zero.

Domain Summary: Shows the rank, score and changes for each domain, for each year.

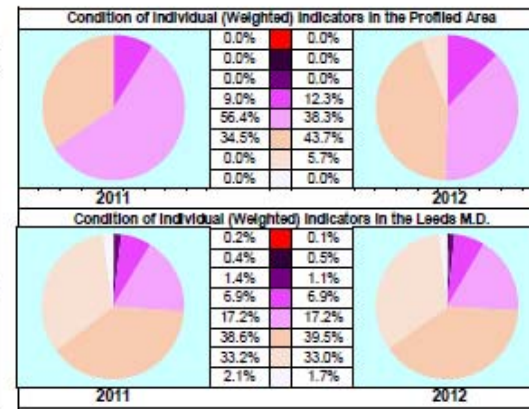
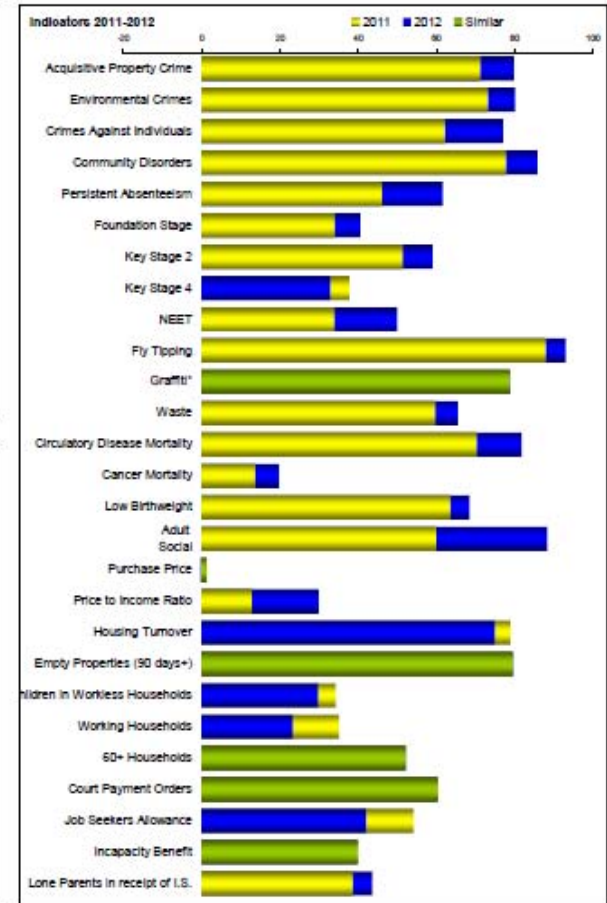
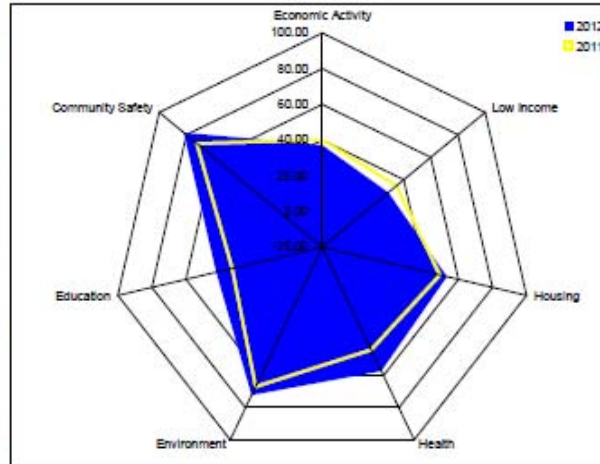
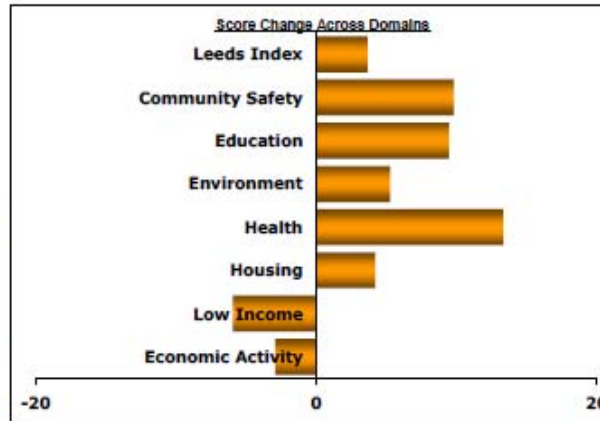
Indicators: Shows the score, underlying data and changes for each indicator, for each year.

Bar Chart (Score Change Across Domains): A graphical representation of the change in the domain scores between this year and last. N.B. an increase in score indicates improvement, a decrease in score indicates deterioration.

Bar Chart (Indicators 2011-2012): A graphical representation comparing the indicator scores for each year. N.B. indicators showing minimal change are represented by green bars.

Spidergram: A graphical representation comparing the domain scores for each year.

Pie Charts: Graphical representations of the weighted proportions of individual indicators falling into each band.



Colour Keys for Pie Charts and Tables

Indicator and Domain Index Scores	Indicator and Domain Score Changes
Least Successful	Most Deteriorated
↓	↓
↓	↓
↓	↓
Average	Static
↓	↓
Most Successful	Most Improved

Data cells and pie diagrams are coloured to highlight levels of significance as used elsewhere in the index (from the City average in the case of scores or "No Change" i.e. Zero, in the case of score changes).

Whilst the concept of "significance" highlights statistically important values within a dataset it must be noted that the bands are unique to each indicator and domain for each year, or period of comparison in the case of "change".

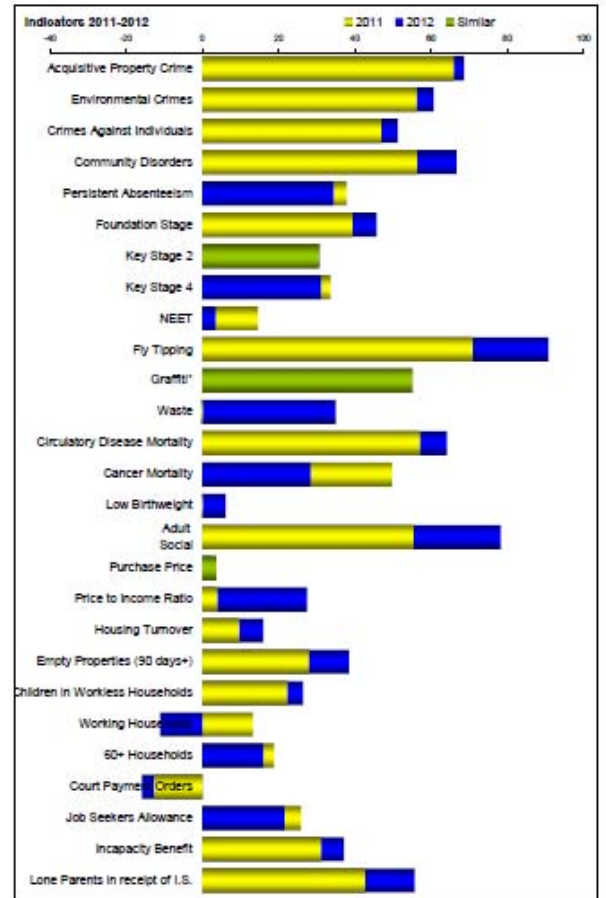
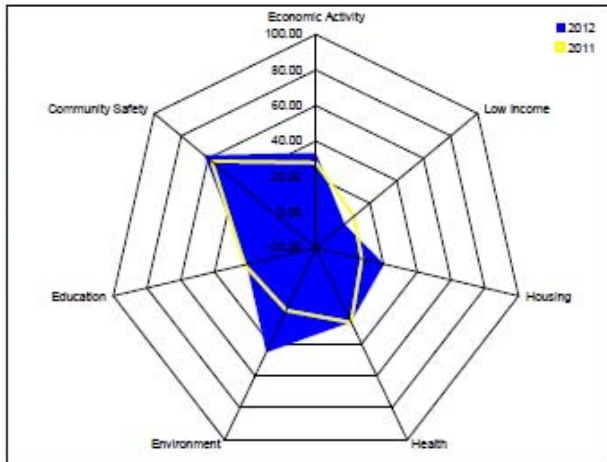
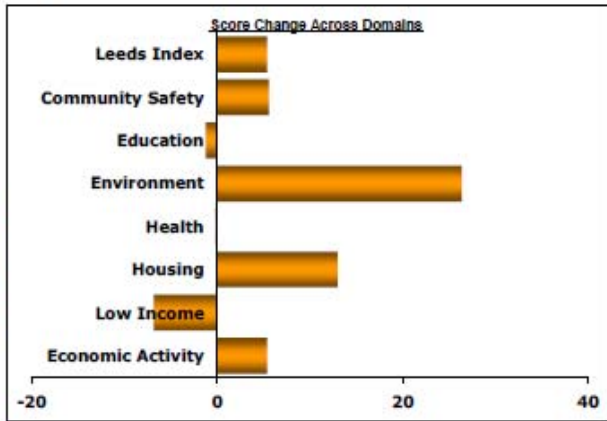


Leeds Neighbourhood Index

E02002404: Cross Green, East End Park and Richmond Hill

Domain Summary	2011		2012		Change	
	Rank	Score	Rank	Score	Rank	Score
Economic Activity	12	28.01	18	33.40	6	5.39
Low Income	9	8.14	12	1.33	3	-6.82
Housing	3	7.22	3	20.20	0	12.98
Health	9	28.82	8	28.37	-3	-0.46
Environment	7	18.96	9	45.32	2	26.36
Education	15	22.25	5	21.04	-10	-1.21
Community Safety	9	57.30	9	62.89	0	5.59
Leeds Index	3	0.50	3	5.89	0	5.40

Indicators	2011		2012		Change	
	Data	Score	Data	Score	Data	Score
Job Seekers' Allowance	9.03%	25.80	9.49%	21.43	0.46	-4.36
Incapacity Benefit	9.76%	31.03	8.99%	37.06	-0.77	6.03
Lone Parent Income Support	4.36%	42.67	3.37%	55.67	-0.99	13.00
Children in Workless Households	568	22.22	564	28.41	-32	4.18
Households Receiving In-Work Benefits	246	13.28	312	-11.07	66	-24.35
60+ Households in Receipt of Benefits	500	18.75	515	15.99	15	-2.76
Court Payment Orders	628	-12.60	645	-15.84	17	-3.24
Average Purchase Price	£91,579	3.88	£96,412	2.20	-£5,167	-1.45
Price / Income Ratio	3.46	3.88	5.04	27.46	1.58	23.58
Housing Turnover	37.08%	9.63	34.77%	15.95	-2.31	6.31
Empty Homes (90+ days)	15.64%	27.90	13.71%	39.38	-1.93	10.48
Circulatory Disease Mortality	106.11	58.93	91.74	84.15	-14.37	7.22
Cancer Mortality	136.82	49.72	174.58	28.38	37.76	-21.34
Low Birthweight	13.31	-0.10	12.68	6.01	-0.6	6.10
Adult Social Care	121	55.31	80	78.21	-41	22.91
Fly Tipping	135	70.83	47	90.67	-88	19.84
Graffiti*	59	55.04	59	55.04	*	*
Waste Issues	326	-0.24	212	35.03	-114	35.27
Persistent Absenteeism	12.77%	37.82	13.43%	34.43	0.66	-3.39
Foundation Stage	38.80%	39.40	43.53%	45.72	4.64	6.33
Key Stage 2	54.93%	30.40	55.10%	30.70	0.17	0.30
Key Stage 4	38.24%	33.58	36.51%	31.11	-1.73	-2.47
NEET	14.09%	14.58	15.87%	3.57	1.78	-10.99
Acquisitive Property Crime	549	65.81	511	68.64	-38	2.82
Environmental Crimes	224	58.18	203	60.63	-21	4.47
Crimes Against Individuals	473	46.90	437	51.22	-36	4.33
Community Disorders	818	58.27	852	65.61	-36	10.34



Notes:

* Due to changes in the service, small area data on the number of graffiti jobs cleared by the Council is not available for 2011/12. To maintain the integrity of the Neighbourhood Index the data for 2010/11 has been rolled forward into the system so the change appears as zero.

Domain Summary: Shows the rank, score and changes for each domain, for each year.

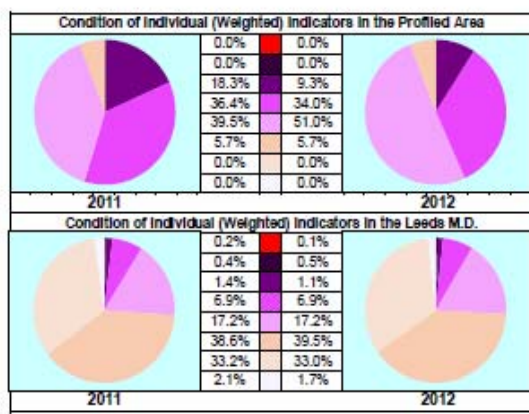
Indicators: Shows the score, underlying data and changes for each indicator, for each year.

Bar Chart (Score Change Across Domains): A graphical representation of the change in the domain scores between this year and last. N.B. an increase in score indicates improvement, a decrease in score indicates deterioration.

Bar Chart (Indicators 2011-2012): A graphical representation comparing the indicator scores for each year. N.B. indicators showing minimal change are represented by green bars.

Spidergram: A graphical representation comparing the domain scores for each year.

Pie Charts: Graphical representations of the weighted proportions of individual indicators falling into each band.



Indicator and Domain Index Scores	Indicator and Domain Score Changes
Least Successful	Most Deteriorated
↓	↓
↓	↓
↓	↓
Average	Static
↓	↓
Most Successful	Most Improved

Data cells and pie diagrams are coloured to highlight levels of significance as used elsewhere in the index (from the City average in the case of scores or 'No Change' i.e. Zero, in the case of score changes).

Whilst the concept of 'significance' highlights statistically important values within a dataset it must be noted that the bands are unique to each indicator and domain for each year, or period of comparison in the case of 'change'.